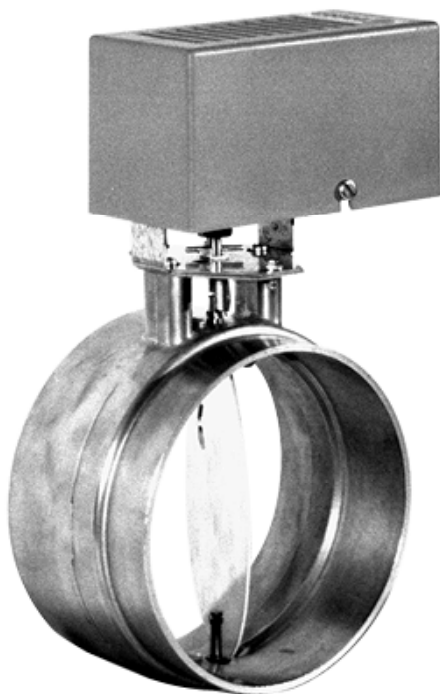


## STACK PACK SL26 SERIES VENT/FLUE DAMPER

For Gas Fired Boilers, Furnaces and Water Heaters  
with Low Height Requirements



### SL26 SERIES



Covered by patent nos. 4,039,123 and 4,404,613

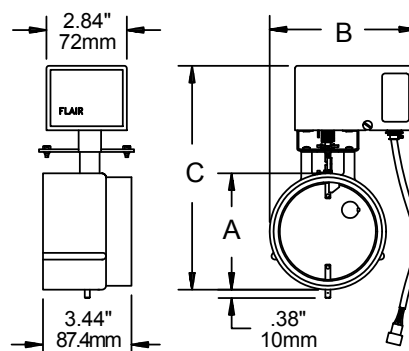


### DIMENSIONS

VENT SIZE	A		B		C	
3"	3.29"	84mm	5.70"	145mm	19.55"	500mm
4"	4.29"	109mm	6.20"	158mm	20.55"	522mm
5"	5.29"	134mm	6.70"	170mm	21.55"	547mm
6"	6.29"	160mm	7.20"	183mm	22.55"	573mm
7"	7.29"	185mm	7.70"	196mm	23.55"	598mm
8"	8.29"	211mm	8.20"	208mm	24.55"	624mm
9"	9.29"	236mm	8.70"	221mm	25.55"	649mm
10"	10.29"	261mm	9.20"	234mm	26.55"	674mm
12"	12.29"	312mm	10.20"	259mm	28.55"	725mm

### BENEFITS & SPECIAL FEATURES

- Tight closing damper vane (with provision for standing pilot) for maximum energy savings, resulting in unsurpassed  $D_o$  factors.
- Low profile lightweight aluminum precision casting to fit under standard draft hoods, or for applications with low height restriction.
- Precision casting prevents interference between vane and flue pipe.
- Lower friction, universal round rod design for greater durability.
- Easy to service: replaceable actuator.
- 24 VAC, adaptable to millivolt and 120 VAC systems.
- Patented dual interlock positively prevents burner operation when vane is in other than fully open position.
- Safe, low voltage control circuit, compatible with standing pilot or intermittent ignition devices.
- Damper will always fail in the safe, open position on loss of power and will allow continued normal burner operation.
- Will start to close only when the burner is proven off.
- Heavy duty, low temperature motor with integral clutch and lost motion feature to ensure longer life.
- Direct driven end switch for positive burner control.
- Attractive high temperature plastic cover.
- Quick connect receptacle for easy, safe and reliable attachment to optional FLAIR harness.
- 725° Fahrenheit flue damper rating.
- Flow direction and two vane position indicators.



## ELECTRICAL

POWER REQUIREMENTS ..... 24 VAC, 50/60 Hz.

MINIMUM WIRING REQUIREMENTS ..... 18 gauge 90° C.

THERMOSTAT ANTICIPATION ..... 0.1 amp. + gas valve current.

### DAMPER MOTOR

Power draw requirements ..... 6 watts at 24 VAC when closed or closing.

Torque (running) ..... 20 in./oz. (.1412N/M) minimum at 20.4 volts.

Timing ..... opens in 3 seconds (0.05 min.), closes in 8 seconds (0.1333 min.)

Time delay ..... begins closing 4 seconds after signal to close.

Characteristics ..... power close, spring open.

Type ..... synchronous, hysteresis.

SWITCHING ..... 2 precision snap acting micro switches, 5 amps resistive at 125/250 VAC.

P.C. BOARD ..... 2 oz./ft.<sup>2</sup> one side copper, flame retardant.

## SPECIFICATIONS

PART NO.*	VENT SIZE	SHIPPING WT. (lbs.)	Electronic Ignition		Standing Pilot			
			FREE AREA	D <sub>o</sub> FACTOR (NO KNOCKOUT)	KNOCKOUT DIAMETER	KNOCKOUT AREA	FREE AREA	D <sub>o</sub> FACTOR (KNOCKOUT)
SL260003	3"	2.7	0.0003	0	0.798	0.5001	0.5004	.0720
SL260004	4"	2.9	.0003	.0000	0.798	0.5001	0.5004	.0650
SL260005	5"	3.2	.0003	.0000	0.798	0.5001	0.5004	.0400
SL260006	6"	3.5	.0003	.0000	0.798	0.5001	0.5004	.0271
SL260007	7"	3.8	.0003	.0000	0.798	0.5001	0.5004	.0196
SL260008	8"	4.1	.0003	.0000	0.798	0.5001	0.5004	.0148
SL260009	9"	4.4	.0003	.0000	0.798	0.5001	0.5004	.0116
SL260010	10"	4.7	.0003	.0000	2 X 0.798	1.0002	1.0005	.0188
SL260012	12"	5.2	.0003	.0000	2 X 0.798	1.0002	1.0005	.0129

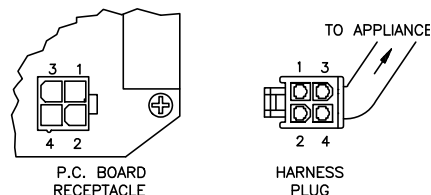
## AVAILABLE PLUG-IN WIRING HARNESS

SL26 Dampers incorporate a receptacle for quick, easy and trouble free connection to the wiring harness. AH18 Series harnesses contain an industry standard plug on the appliance end. Other series are available to conform to the appliance manufacturer's special requirements. Custom lengths are available by special order. See harness specification sheets or consult FLAIR for details.

PART NO.	DESCRIPTION
AH184204	Adapter is to be used when receptacle equipped Stack Packs are to be wired to non-plug-in harnesses. Consists of damper connector, 4" leads and wire nuts.
AH189048	Plug on Damper end. Industry standard plug on appliance end. Plastic cable - 48" length.
AH189096	Plug on Damper end. Industry standard plug on appliance end. Plastic cable - 96" length.
AH189148	Plug on Damper end. Industry standard plug on appliance end. BX cable - 48" length.
AH189196	Plug on Damper end. Industry standard plug on appliance end. BX cable - 96" length.

\* To include a bx cable harness with industry plug on appliance end, substitute the numbers "48" or "96" for the first "00" of the damper part number.

## RECEPTACLE/PLUG WIRING DIAGRAM

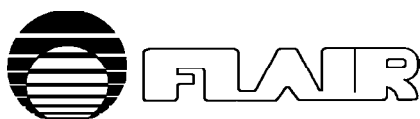


WIRE	DESCRIPTION OF OPERATION
1	24 VAC input
2	24 VAC input
3	To gas valve
4	To thermostat or controller

## REPLACEMENT PARTS & ACCESSORIES

PART NO.	DESCRIPTION
RP545000	Replacement actuator.
RP100000	Actuator cover.
RP103010	Vane knockout plug.
AS000405	Vent safety switch (spot sensor).
AS000406	Vent safety switch (capillary sensor).

Flair pursues a policy of constant improvement. For this reason, all specifications are subject to change without notice.



FLAIR INTERNATIONAL CORPORATION

600 Old Willets Path • Hauppauge, New York 11788 • Tel: (516) 234-3600 • Fax: (516) 234-3610